

## HFE-25/50

### INDUSTRIAL AIR CLEANER WITH ELECTROSTATIC FILTER

Wall or ceiling mounted industrial air cleaner with electrostatic filter and integrated extraction fan. Depending on the specific application, pre and final filters have to be selected and ordered separately.

The HFE-25/50 is eminently suitable for filtering airborne particles typical for warehouses, like dust produced by paper and cardboard boxes as well as rubber particles from transportation belts and truck wheels.

The filter unit can also be used for treating welding fumes originating from oil treated steel. The integrated oil collector ensures easy oil removal.



Shown: HFE-25

#### APPLICATIONS

The HFE-25/50 is intended to be used for the following applications:

- airborne dust particles
- all common welding processes
- oil mist in welding fume



Do **not** use the HFE-25/50 for the following applications or in the following circumstances:

- arc-air gouging
- aluminium laser cutting
- extraction of aggressive fumes and gases (e.g. from acids, from alkaline, from soldering paste containing lithium)
- extraction of hot gases (more than 45°C/113°F continuously)
- grinding aluminum and magnesium
- flame spraying
- extraction of cement, saw dust, wood dust etc.
- sucking cigarettes, cigars, oiled tissues and other burning particles, objects and acids
- explosive environments or explosive substances/gases



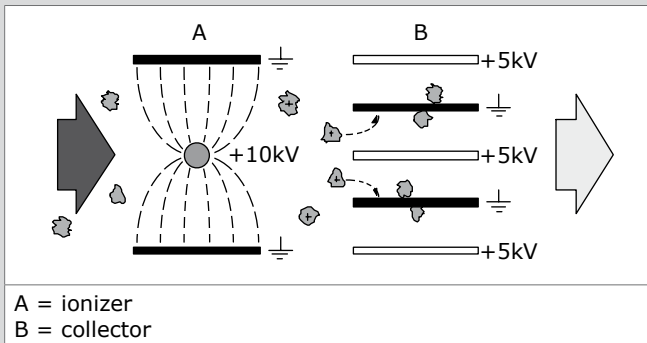
#### SPECIFICATIONS

	HFE-25	HFE-50
<b>Physical dimensions and properties</b>		
Dimensions:		
• height	630 mm	630 mm
• width	560 mm	1010 mm
• depth	993 mm	993 mm
Weight (net)	100 kg	195 kg
Material housing	epoxy coated steel	
Colour	grey RAL 7035	
<b>Filters</b>		
Filter package:		
• FIS (ionizer)	1	2
• FCS (collector)	1	2
Material:	aluminium aluminium	
• ionizer		
• collector		
Max. filtration capacity	2500 m <sup>3</sup> /h	5000 m <sup>3</sup> /h
Filter surface	14,2 m <sup>2</sup>	28,4 m <sup>2</sup>
Pre/final filters	to be selected/ordered separately	

	HFE-25	HFE-50
Pressure drop	< 150 Pa	< 175 Pa
<b>Electrical data</b>		
Supply voltage	230-400V/1-3ph/50Hz	
Power consumption:		
• motor	0.75 kW	1.5 kW
• filter package	35 W	40 W
Thermal protection	yes	yes
Control voltage	24 VAC	24 VAC
Control fuse	2.0 AT	2.0 AT
Voltage:		
• ionizer	+5 kV	+5 kV
• collector	+10 kV	+10 kV
Protection class	IP 55	IP 55
<b>Ambient conditions</b>		
Operating temperature:		
• min.	5°C (41°F)	
• nom	20°C (68°F)	
• max.	45°C (113°F)	
Max. relative humidity	80%	
Outdoor use allowed	no	
Storage conditions	<ul style="list-style-type: none"> <li>• 5-45°C (41-113°F)</li> <li>• relative humidity max. 80%</li> </ul>	
<b>Product combinations (choice required)</b>		
Prefilters:		
• SAF	• aluminium filter (standard)	
• SOD	• demister for oilmist application	
Final filters:		
• SAF	• aluminium filter (standard)	
• SSF	• progressive synthetic filter (filter class G3)	
• SCF	• activated carbon filter for odour control	
<b>Options</b>		
Oil disposal device	oil drainer	oil drainer
Remote control	RC-MSA	RC-MSA
• with timer	RC-MSA/T	RC-MSA/T
Reduction of air volume for oil mist application	pulley set	pulley set

	HFE-25	HFE-50
<b>■ Scope of supply</b>		
Air cleaner (incl. ionizer + collector, excl. pre and final filter) - Electrical diagram - Manual - Square key 6 mm - Mounting material (4x eye bolt - 4x sliding nut - 4x lock ring)		
<b>■ Order information</b>		
Article no.:		
<i>Airflow left-right</i>		
• 230V/1ph/50Hz	7460200000	7461200000
• 230V/3ph/50Hz	-	7461400000
• 400V/3ph/50Hz	7460600000	7461600000
<i>Airflow right-left</i>		
• 230V/1ph/50Hz	7460210000	7461210000
• 230V/3ph/50Hz	-	7461410000
• 400V/3ph/50Hz	7460610000	7461610000
Number/package	1	1
<b>■ Shipping data</b>		
Gross weight (1 pc)	115 kg	210 kg
Max. number/pallet	3	1
• packing dimensions	• 80 x 120 x 210 cm	• 80 x 120 x 130 cm
• gross weight	• 315 kg	• 210 kg
Harmonized Tariff Code	8421.39.2090	8421.39.2090
Country of origin	Netherlands	Netherlands

### ELECTROSTATIC FILTER PRINCIPLE

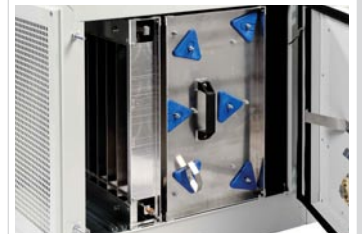


### APPROVALS/CERTIFICATES

	EU Directive 2002/95/EC (RoHS) (valid as of July 2006)

### FEATURES

Constant extraction level due to open filter structure



High voltage indicator light



Easy access to electro part



Product type

**HFE-25/50**

Article no.

refer to order information

Product category

general filtration units

Version

230311/A

Always check the latest version on [www.plymovent.com](http://www.plymovent.com).